

TT 點焊正四通

產品圖



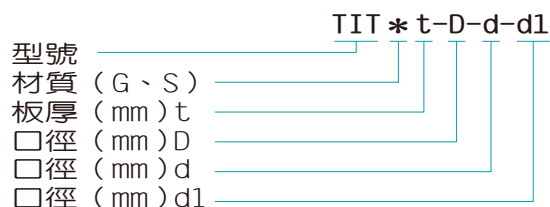
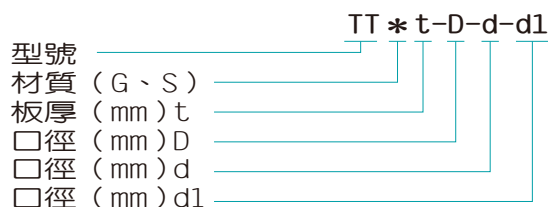
TIT 點焊斜四通

產品圖

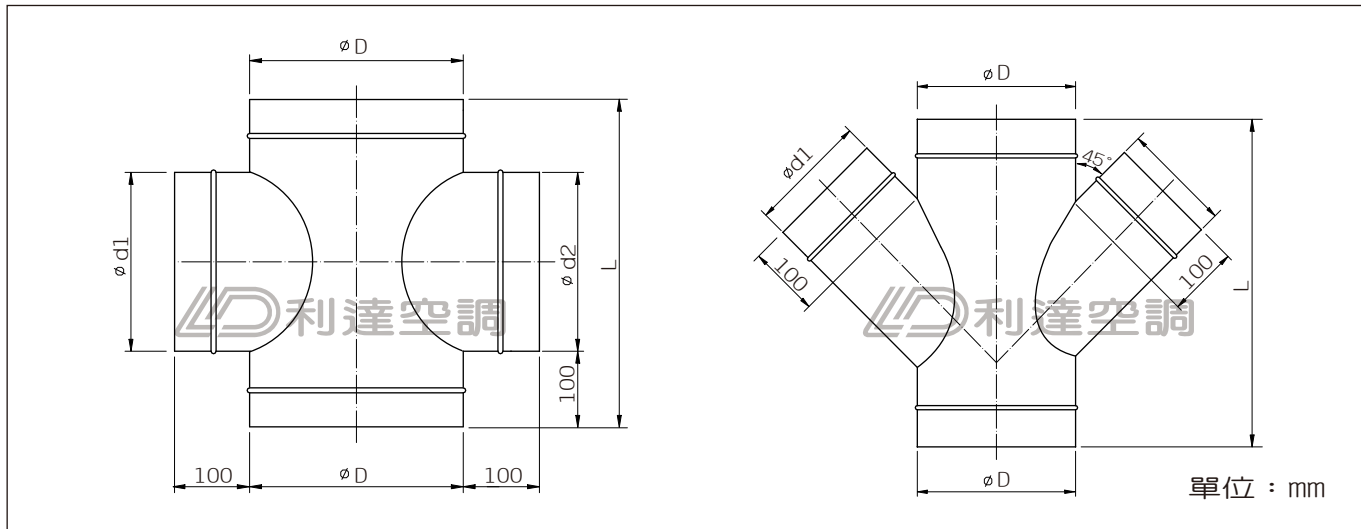


產品說明

- 材質可選用鍍鋅鋼板 (G) 或不鏽鋼板 (S)。
- 材料先以電腦切割出原形後，再組合而成，口徑準確，外型美觀。
- 適合用於一般空調風管。
- 口徑由 75 mm 起，厚度與配合使用之圓管相同。
- 厚度 0.6 mm ~ 1.2 mm，1.5 mm 以上採 焊方式製作。
- 特殊規格可依客戶需求訂製。
- 訂貨請指定內插或平鐵、角鐵法蘭接合方式。

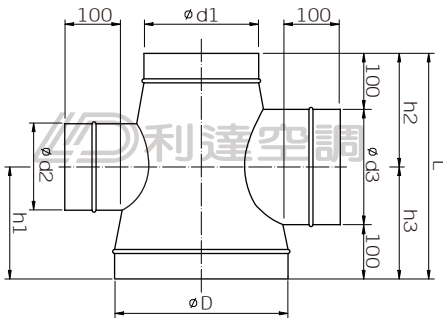


尺寸圖

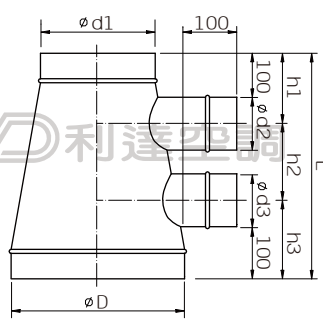


其他四通形式

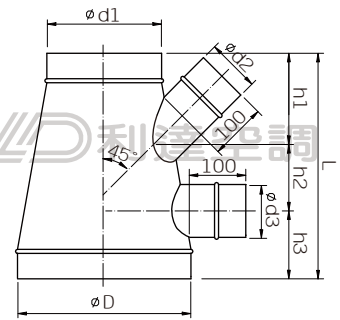
1. TAT點焊異徑正四通



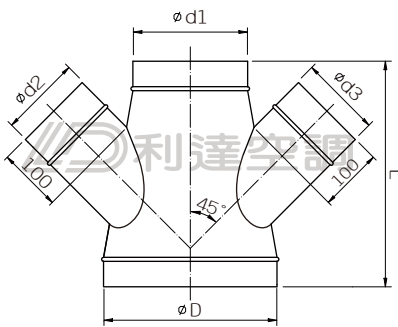
2. TAF點焊異徑單邊正四通



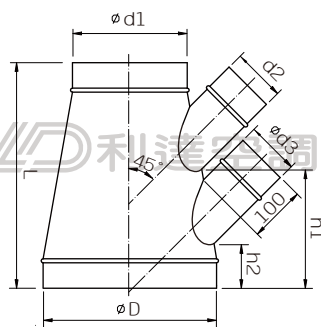
3. TAK點焊異徑單邊四通



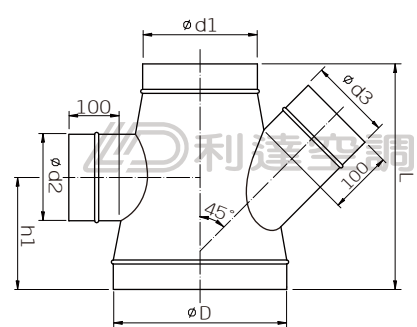
4. TIAT點焊異徑斜四通



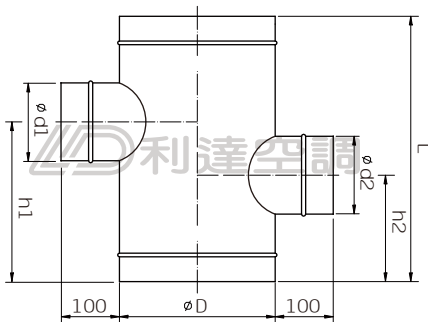
5. TIAF點焊異徑單邊斜四通



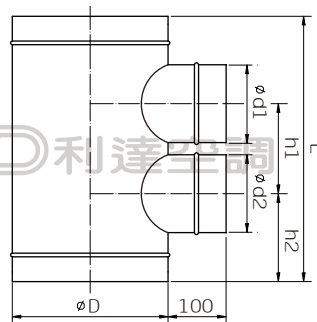
6. TIAK點焊異徑四通



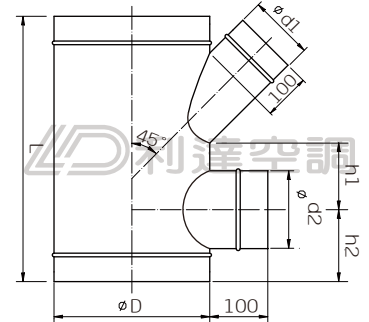
7. TTZ點焊正四通



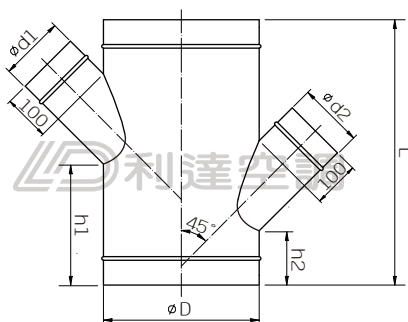
8. TTF點焊單邊正四通



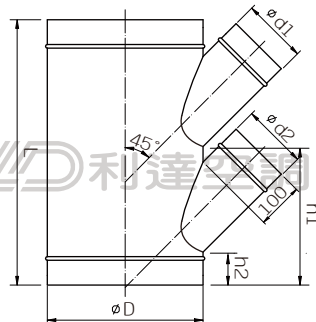
9. TTK點焊單邊正四通



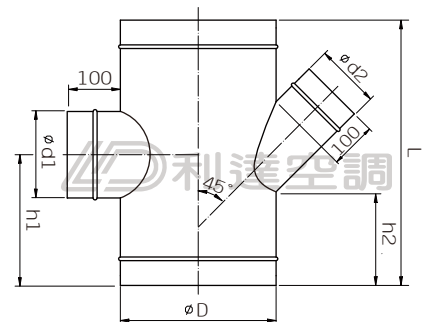
10. TITZ點焊斜四通



11. TITF點焊單邊斜四通



12. TITK點焊四通



單位：mm